

Bidding the Bedes: An Introduction to Paternosters

Dame Elizabeth Alles

lady.elizabethe@gmail.com

<http://sites.google.com/site/elizabethealles/>

“Of smal coral aboute hire arm she bar
A peire of bedes, gauded al with grene,
And theron heng a brooch of gold ful sheene,
On which ther was first write a crowned a,
And after amor vincit omnia.” – Geoffrey Chaucer, The Canterbury Tales

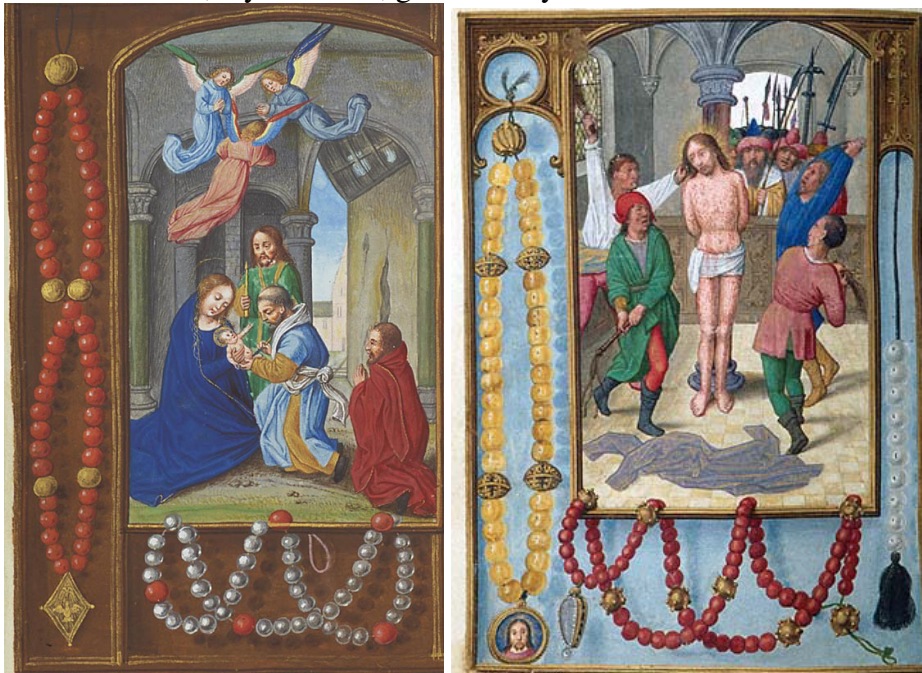
Terms

- ❖ Bid/bede - modern meaning of “bead” by 1377
- ❖ Paternoster – term for string of beads by 1250
- ❖ Rosary – standardized at Council of Trent in 1560s

Origin theories

- ❖ St. Dominic
- ❖ Crusades
- ❖ Ascetics/hermits
- ❖ Lay brother

- Emerge by 11th century
- Present in western Europe – modern Austria, Belgium, Croatia, Czech Republic, Denmark, France, Germany, Hungary, Ireland, Italy, Liechtenstein, Netherlands, Norway, Poland, Portugal, Slovakia, Spain, Sweden, Switzerland, United Kingdom (England, Scotland) - and European colonies (Brazil, Canada, Peru, Philippines, United States)
- Evolved as localized, lay devotion, great variety



Book of Hours (MMW 10 E 3), c. 1500, MIM; Da Costa Hours, c. 1515, PML

Evidence

❖ Artifacts

❖ Documents

❖ Works of art



Bone beads, 12th c., GCM



Jet beads, 13th c. NMS



Rosary bead, 14th c., MOL



Bone beads, 13th-15th c. HCT



Jet beads, 14th c., HMS,



Amber bead, 16th c., MOL



Stone beads, 16th c., AVF



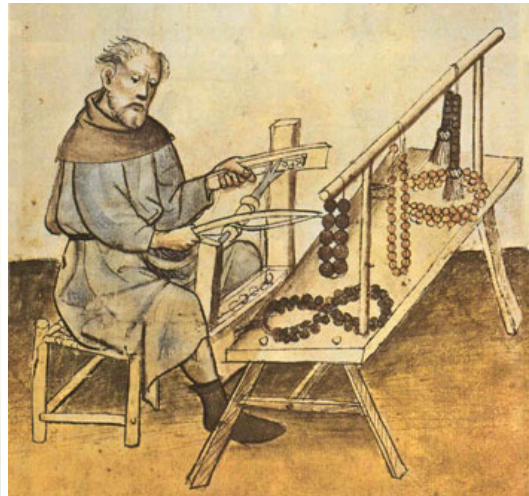
Emerald, diamond, and gold beads, c. 1600, MRM



Jet beads, c. 1500, ED



Jet beads, c. 1500, ED



Paternosterer at work, HMZ

Purpose of paternosters

❖ Prayers

❖ Piety

❖ Wealth



Krönung Mariens, 1493, IFR



Agate beads, 16th c., LP



Langdale Rosary, 16th c., V&A



Painted rock crystal, 16th c. LP



Langdale Rosary, 16th c., V&A



Boxwood, early 16th c, MMA



Boxwood prayer nut, 16th c. KHM



Paternoster construction

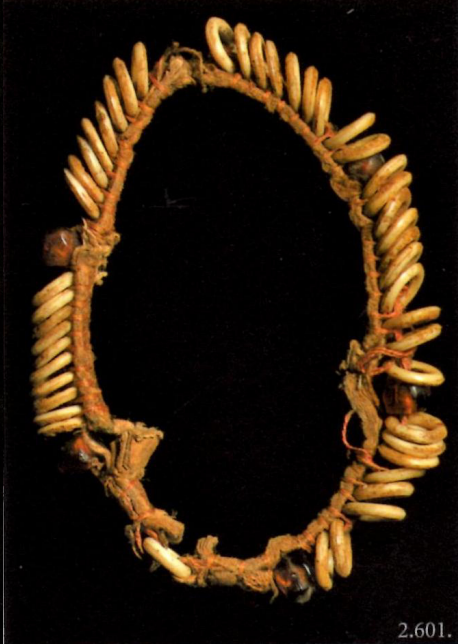
- ❖ Layout - straight string, loop, loop with tail, disk loop, decade rings



Jasper, 16th c. VS; Amber, c. 1250, WMT; Jasper late 16th c. ED; Jasper, 14th c., IFR, Chalcedony, 17th c. ED



Coral, early 17th c, ED



Bone and amber, 16th/17th c, ED 1



Bone and amber, 16th c., IFR



Decade rings, 15th c., V&A



Copper alloy ring, 16th/17th c., PAS



Amber beads on silk, 15th-16th c., MOL

❖ Stringing materials: braided or woven silk thread (crimson, black, gold, green, blue, purple), linen thread, chain/wire



Paternoster of Stephan III. Praun, 16th c., GNM



Ivory beads in silver gilt mounts, c. 1500, MMA



Rock crystal, 16th-17th c. MCA



Book of Hours (MS 38126), 1485, BL; Cleve, *La Vierge et l'Enfant avec saint Bernard en prière*, 1505, LP; *Votivtafel des Jörg Rottal zu Talberg*, 1505. IFR

- ❖ Gauds/markers/paters
- ❖ Divisions - decades

- ❖ Aves
- ❖ Spacers



Wood beads, 16th c., MRT



Jet beads, MFL



Langdale rosary, 16th c., V&A



Agate beads, late 16th c., ED



Malachite beads, 15th c., ED

Bead Shapes

acorns, chess/checker boards cornered with pearls, cubes, disks (vertical and horizontal), ears of grain (corn and barley), flat, fleur-de-lis, flowers, fluted rounds, heads/faces, hearts, hexagons, initials, instruments of passion, lozenges, marguerites (daisies), oblong faceted, olives, ovals, polyhedrons, ribbed ovals, sabots, seamed rounds, skulls, spherical/rounds, squared rondelles, squares, towers, tri-cornered, twisted corrugated rounds



15th c jet ED; late 16th c. rock crystal, ED, 1475 German V&A, rock crystal, c. 1500, ED



Wood beads, SA



Carnelian beads, 16th c., KAS



Wood beads, 16th c., MRT



Rosary beads, early 16th c., SMB

Bead Materials

Amber-white, gold, dark red, blue-black*
Bone-white, black*

Coral-red, white*
Glass - green, red, blue*

Agate-moss
Amethyst
Balas ruby
Beryl
Bloodstone
Carnelian
Chalcedony

Citrine
Copper
Ebony
Emerald
Garnet
Gold*
Horn

Ivory
Jasper
Jet*
Lapis lazuli
Mother of pearl
Porcelain
Quartz-green

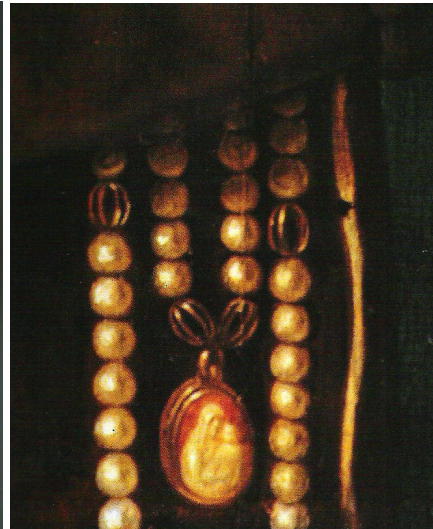
Pearl
Rock crystal*
Ruby
Sapphire
Shell
Silver*
Wood

Decoration: carved (inside and outside), curved corrugated, enameled, engraved, gilded, faceted, filigree, fluted, jeweled

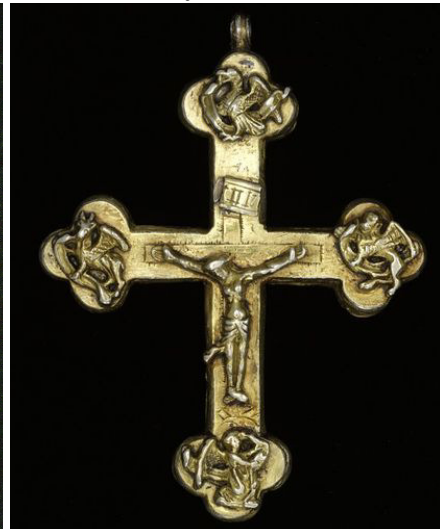
Terminals

- ❖ Brooches
- ❖ Cameos
- ❖ Hearts
- ❖ Crosses/crucifixes – baptismal, credo, double, equal-armed, floretty, Greek, Jerusalem, Latin, Lorraine, reliquary, St. Andrew, Tau/St. Anthony
- ❖ Religious medals – saints (Catherine, Christopher, James, John, Martin, Sebastian), Virgin Mary, Virgin Mary and Christ Child
- ❖ Secular medals – animals, dolphin's tooth, unicorn's horn
- ❖ Rings: metal, stone, plain, set with stone, clasped hands, interlocked
- ❖ Memento mori
- ❖ Pilgrim's badges
- ❖ Pomanders
- ❖ Reliquary pendants
- ❖ Tassels

Cameos



Crosses/crucifixes



Onyx cameo, mid-15th c., MMA; Jean Hey, *Mary Magdalene and a Donor*, 1498, LP; Silver and silver gilt crucifix, 15th c., V&A

Crosses/crucifixes



Rock crystal beads, 16th c., KAS; Jet beads, 16th c., KAS, glass beads, 16th c., KHM; Amber beads, 16th c., ED



Coral, 15th c., ED, malachite, 16th c., ED; Crucifix, late 16th c., AIC; Rock crystal and silver, 16th c., MMA



Rosary of Báthory István, 1570, IM; reliquary cross, late 15th c., AIC; wood crucifix, 1523, LP

Crosses/crucifixes



Beads, 16th c. ED



Rock crystal, early 17th c., ED



Rock crystal, 17th c., V&A

Pilgrim's badges



Agate, 16th c., ED



Coral beads, 16th c., HMB



Mother of pearl, c. 1600, ED



Jet bead, 16th c. V&A

Pomanders



Pomander, 16th c., RCT



Pomander, 16th c. MFL

Pomanders



Memento Mori



c. 1600, S. German agate, ED, 1st half of 17th c, German agate, eD 16th c wood, ED.



Bone pendant, 16th c., MMA; bone bead, 16th c., V&A

Memento Mori



Jet bead, late 16th c., V&A

Reliquaries



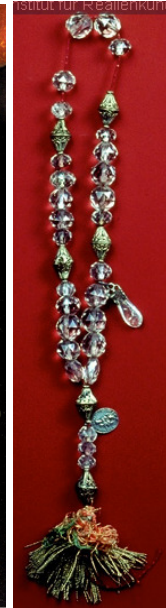
Rock crystal, mid-15th c., ED

Reliquaries



Rock crystal, mid- 15th c., ED; bloodstone, c. 1500, ED; beads, c. 1600, ED; Rock crystal, 16th c., ED.

Tassels



Amber beads, 16th c., ED

Rock crystal, 14th c., IFR; Bloodstone, 17th c., ED

Religious medals



16th c. Spanish jet ED, 16th c. jet, 16th c agate ED



Pendants: St. Sebastian, 15th c., V&A; St. Christopher, V&A; St. Ann, Virgin, and Child, early 16th c. MMA; Virgin and child, 16th c., WAM; St. George, c. 1500, ED



Pendants: c. 1600, V&A; Coronation of the Virgin, 1540, MMA; Nativity, 16th c. ED; Diptych, 16th c., MMA

Religious medals



Pendant triptych, 16th c., MMA



Book pendant, 16th c., SMB

Rings



Rock crystal, 16th c., ED; carnelian, 17th c., KAS; Boxwood, 16th c., LP (also below); beads, c. 1630, ED

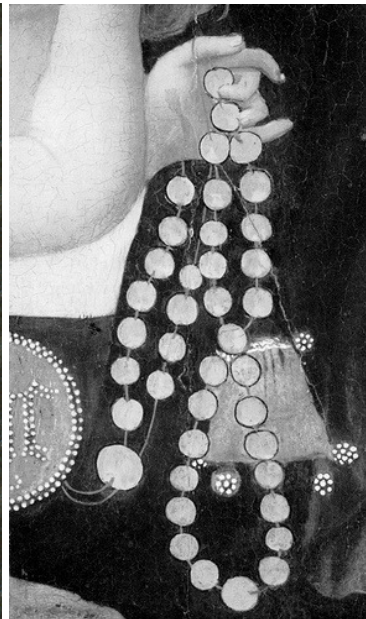


Wearing a paternoster

- ❖ baldric
- ❖ bracelet
- ❖ on the belt – looped, knotted, tied, girdle hook, bag
- ❖ necklace
- ❖ girdle
- ❖ hat
- ❖ pinned



Tomb effigy of Edith Pexall, 1535, TE; Pastoral tapestry, 1500-20, V&A; Veneto, *Portrait of a Young Lady*. c. 1520-1530, NGC



Saint, 16th c., MHN; St. James, 16th c. KHM; St. Hedwig of Silesia, 1353; Master of St. Veronica, *Mother of God with the Peas Blossom*, WRM



Alabaster, 15th c., NCS; *Story of Troy*, 16th c., BL; *Three Fates*, early 16th c., V&A; St. Anthony, 16th/17th c., MHN

500 Jahre Rosenkranz. Erzbischöfliches Diözesan-Museum Köln, J. P. Bachem KG, 1976.
Edelsteine, Himmelschnure, Rosenkranze & Gebetsketten. Dommuseum zu Salzburg, 2008.
 Laning, Chris. "Bedes Byddyng: Medieval Rosaries & Paternoster Beads." *The Compleat Anachronist*. No 135. 2nd quarter 2007.

--. Paternoster Row. <http://paternoster-row.org>.

--. Paternosters Blog <http://paternosters.blogspot.com/>.

Lightbown, Ronald. *Mediaeval European Jewellery*. London: Victoria & Albert Museum, 1992.

AIC - Art Institute of Chicago

AVF - Anschrift Verein Freundeskreis Museum

BL - British Library

DHM - Deutsches Historisches Museum

ED - *Edelsteine, Himmelschnure, Rosenkranze & Gebetsketten*

GCM - Galway City Museum

GNM - Germanisches National Museum

HCT - Hampshire Cultural Trust

HMB - Historisches Museum Basel

HMS - Historika museet, Stockholm

HMZ - *Hausbuch der Mendelschen*

Zwölfbrüderstiftung

IFR - Institut für mittelalterliche Realienkunde

IM - Iparművészeti Múzeum

JPG - J. Paul Getty Museum

KAS - Kunstauktionshaus Schlosser

KHM - Kunsthistorisches Museum

LP - The Louvre

MCA - Museo Civico d'Arte Antica e Palazzo

MFL - Museum für das Fürstentum Lüneburg

MHN - Musee de Haute-Normandie

MIM - Medieval Illuminated Manuscripts

MMA - Metropolitan Museum of Art

MOL - Museum of London

MRM - Residenz Museum Schatzkammer

MRT - Mary Rose Trust

NMS - National Museums of Scotland

NCS - Norfolk Churches Site

NGC - National Gallery of Canada

PAS - Portable Antiquities Scheme

PML - Pierpont Morgan Library

RCT - Royal Collection Trust (UK)

SA - Scherbaum Archaeologie

SMB - Staatliche Museen zu Berlin

TE - Tudor Effigies

V&A - Victoria and Albert Museum

VS - Schatzkammer, Vienna

WAM - Walters Art Museum

WMT - Waterford Museum of Treasures

WRM - Wallraf-Richartz Museum