

The Skully Bits: Skulls and Skeletons in Paternosters

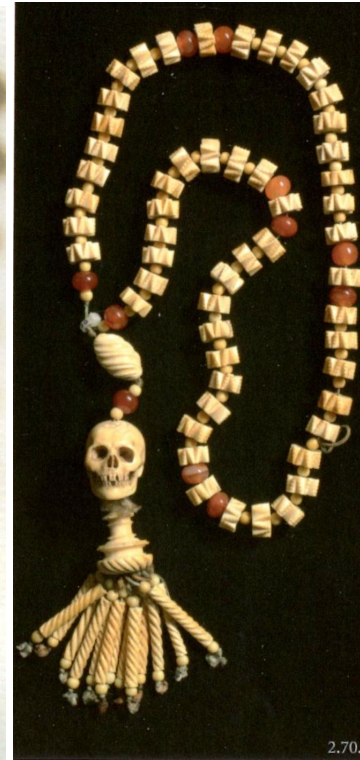
Elizabete Alles

lady.elizabete@gmail.com; <http://sites.google.com/site/elizabetealles/>

Terms

- ❖ Paternoster
- ❖ Rosary
- ❖ Gaud/pater/marker beads
- ❖ Decade
- ❖ Ave beads

Single, complete skull



German amber, 2nd ½ of 16th c., ED; German carnelian, c. 1600, ED; Italian, 17th c., ED; Spanish ivory, 17th c., ED; Flemish or Mexican silver & rock crystal, 16th c., MMA



Jet, c. 1580-1630, V&A; 17th c. bead from parish cemetery in La Ciotat, France; German bloodstone, 17th c., ED (also below); 16th c. ivory, EMR; Beads from Karlstadt, Germany, SCH; Bone and ivory, 17th c. MDLC



Skull missing jaw



Coral, c. 1500, SDO; Spanish quartz, 17th c. ED; Amber, 1620, ED; Spanish jet, beginning of 17th c., ED

2.3



German ivory, beginning of 17th c. ED; Northern Italian wood, 17th c. ED; Italian wood, 17th c. ED; Italian lapis lazuli, 17th c., ED; Mexican bone and silver, c. 1580, MSK; 16th c. ivory, MNR/GI

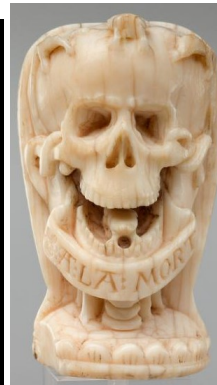


Death's heads – beads with a face/bust on each side



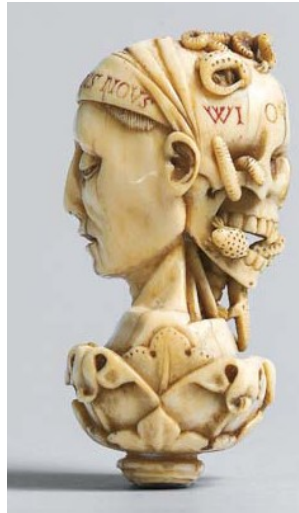
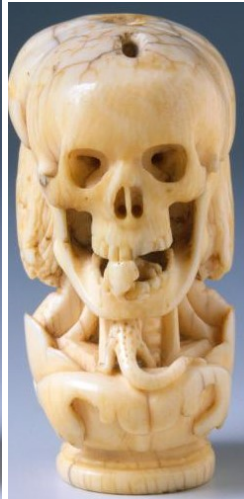
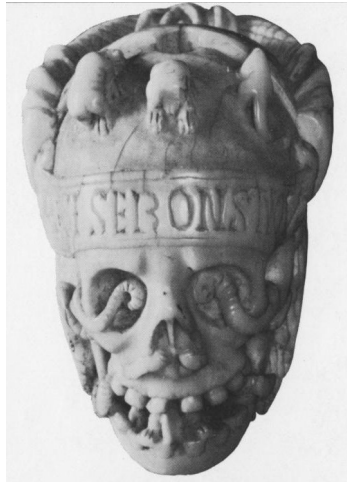
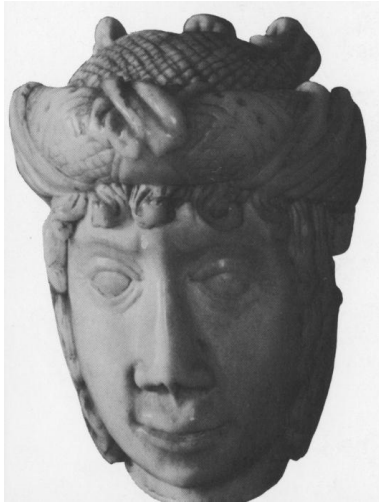
16th c. French ivory BM/GI; 16th c. French or Flemish ivory GI; c. 1500 French or Netherlandish ivory, WC/GI (split); 15-16th c. French or Flemish ivory ROM/GI; ivory GI;



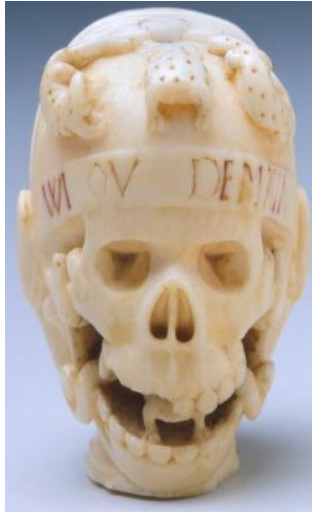
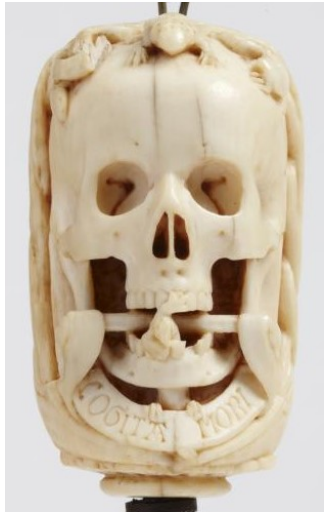


English bone, 16th c., MOL/GI; Early 16th c. German? ivory SLW/GI; , 16th c. ivory French, MSK; c. 1500 French or Flemish ivory, PMA/GI; 1500-1525 French ivory DIA; early 16th c. Netherlandish ivory MKG/GI





Ivory, GI; 16th c. ivory, French or Netherlandish MSK; Ivory, 1500-25, AGO; 16th c. Flemish ivory, AGO/GI; 16th c. ivory, GI; ivory GI





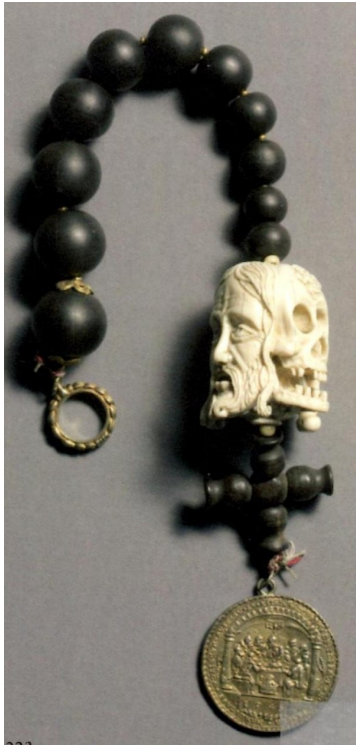
1504 German ivory SLW/GI; ivory GI; 16th c. ivory MSK/GI (split); late 15th c. ivory GI; 16th c. French ivory, BM/GI





Late 15th/early 16th c. ivory AGO/GI; German MBN/GI; 16 c Rosary bead 1921.173 a; 16th c Rosary bead 1921.174 b; early 16th c. bone, German, MKG/BI; early 16th c. bone German MKG/BI





German wood, 16th c., ED; 1st half of 17th c. South German ivory ED; ; 17th cent Italian amber 2.53 ED.

Half-skulls



16th (or 19th c. imitation) ivory, GMD/GI



German, ivory and silver, c. 1500-1525, MMA; 16th c. ivory WAG/GI

Three (or more!) faces



Early 16th c. German bone GI



Ivory GI; Ivory, 16th c. V&A (split); c. 1540 ivory, French or Flemish, GI





1500-1525 ivory, Flemish or French, WAG; Ivory, GI; early 16th c. ivory, French, SLW/GI





17th c. Flemish ivory, HM; French or Flemish ivory, c. 1525-50, V&A; German, ivory and silver, c. 1500-1525, MMA; c. 1540 French ivory WC/GI; Ivory, c. 1525-1550, V&A; PPP - Paris, Petit Palais, Musée des Beaux-Arts de la Ville de Paris



Skeletons lurking



North French or south Netherlandish, ivory, c. 1525-1550, MMA; 15th-16th c. ivory. Northern French GI; Early 16th c jasper KHM





c. 1500-50 ivory, French or Flemish, BMF; German, ivory and silver, c. 1500-25, MMA; c. 1520 ivory MSK/GI; c. 1520 ivory MSK/GI





Italian wood SA



Bone c. 1251-1300, RIB; 16th c.

Source codes

AGO – Art Gallery of Ontario

BM – British Museum

ED – *Edelsteine, Himmelsschnure: Rosenkranze & Gebetsketten*. Dommuseum zu Salzburg, 2008.

EMR - Ecoen, Musée national de la Renaissance

GI – Gothic Ivories Project at The Courtauld Institute of Art, London

GMD - Guéret, Musée d'art et d'archéologie

HM – Hunt Museum, Ireland

KHM – Kunsthistorisches Museum, Vienna

MBN - Munich, Bayerisches Nationalmuseum

MDLC - Musée de la Chartreuse, Douai

MKG - Hamburg, Museum für Kunst und Gewerbe

PPP - Paris, Petit Palais, Musée des Beaux-Arts de la Ville de Paris

RIB - Royal Institute for the Study and Conservation of Belgium's Artistic Heritage

ROM – Royal Ontario Museum

SA - Schlemmer Antiquities

SCH – Scherbaum Archaeologie

SDO - Schatzkammer des Deutschen Ordens, Vienna, Austria

SLW - Stuttgart, Landesmuseum Württemberg

BMF - Boston Museum of Fine Arts

DIA – Detroit Institute of Art

MMA – Metropolitan Museum of Art

MNR - Museo Nazionale di Ravenna

MOL – Museum of London

MSK – Museum Schnutgen, Cologne, Germany

PMA – Philadelphia Museum of Art

V&A – Victoria & Albert Museum, London

WAG - Walters Art Museum

WC - London, The Wernher Collection, Ranger's House