

Dolls in SCA Period
Elizabethhe Alles, OP, OL
lady.elizabethhe@gmail.com

Definition of doll

- small-scale figure of a human being used especially as a child's plaything (Merriam-Webster)
- a small figure representing a baby or other human being, especially for use as a child's toy (dictionary.com)
- a child's toy in the shape of a small person or baby (Cambridge)

Criteria

Single human figure

Common Era



Doll of wool and human hair, (H 8.5 cm, W 7.5 cm,
D 1.8 cm, 8 g),
Doll of wool and papyrus, (H 3 cm, W 1.5 cm, D .7
cm, less than 1 g)

Both from Karanis (Egypt), 1st-5th c., Kelsey
Museum at University of Michigan

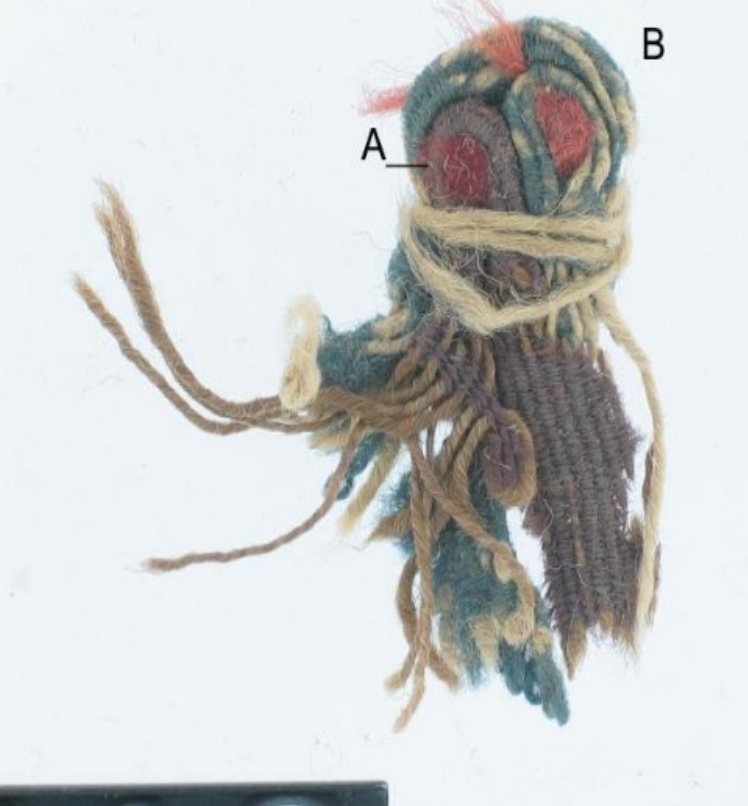




Wool doll, 1st-5th c., (H 7 cm, W 3.5 cm, D 1.2 cm, 2 g)

Wool doll, 1st- 4th c.

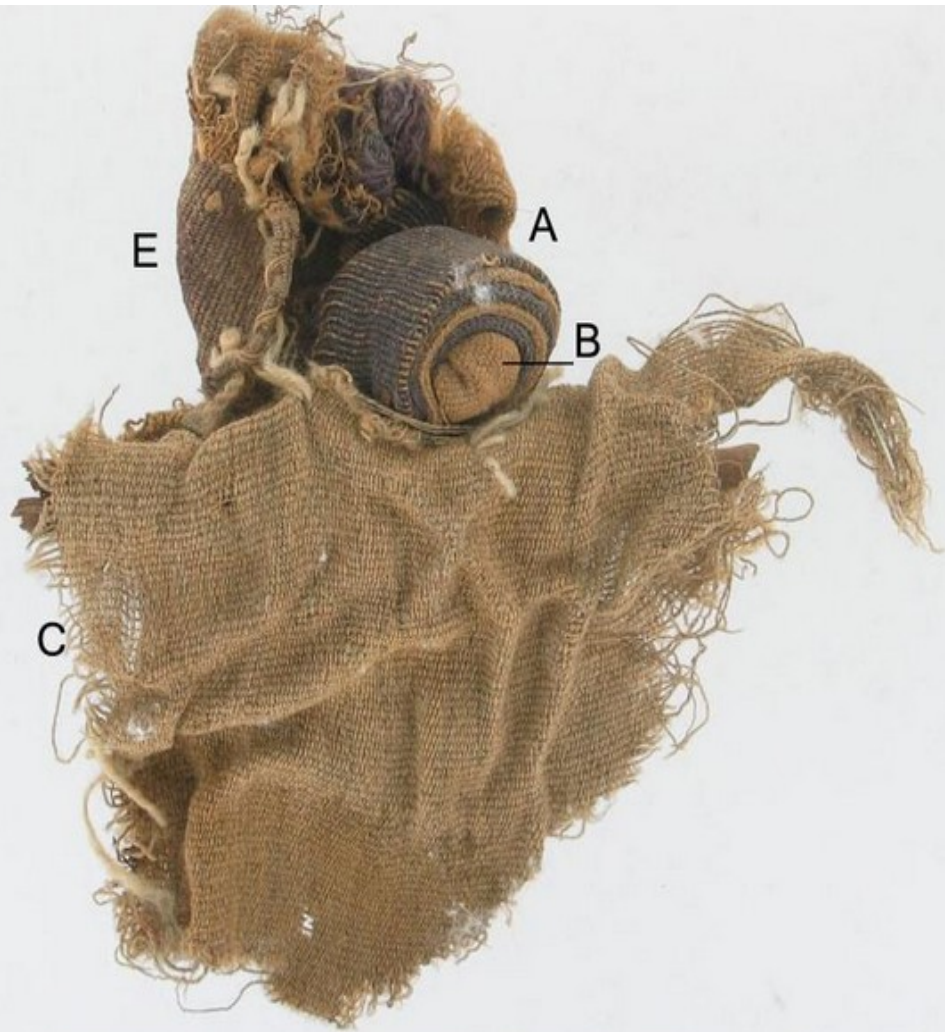
Both from Karanis (Egypt), University of Michigan Kelsey Museum



Wool doll (H 4.5 cm, W 2.5 cm, D .8 cm, 1 g),
Wool doll (H 8.5 cm, W 5 cm, 4.52 g)
Papyrus and wool doll (H 6 cm, W 3 cm, D .9 cm, 1 g)



1st-5th c., Karanis
(Egypt), Kelsey
Museum at University
of Michigan



Doll made of linen, wool, and stick, 1st-5th c.,
Karanis (Egypt), (H 11 cm, W 12 cm, D 2.5 cm,
16.28 g), Kelsey Museum at University of
Michigan





Doll made with wool, palm fiber, and rocks, 1st-5th c., Karanis (Egypt), (H 11 cm, W 13 cm, 24 g), Kelsey Museum at University of Michigan



Linen and wool doll stuffed with papyrus with some strands of hair, c. 200-400, (H 220 mm, W 45 mm)

Partial linen doll stuffed with papyrus, 3rd-5th c (H 3 in)

Both from Oxyrhynchus (modern Behneseh), Egypt, Victoria & Albert Museum



Linen rag-doll stuffed with rags and papyrus, Roman Egypt, 1st-5th c. (H 19.05 cm), British Museum

Doll made of wool, flax, and human hair, late 4th c. (H 16 cm), Egypt Ashmolean Museum



Textile doll with gold jewelry.
1st-2nd c. (H 14.5, W 10 cm, D
3 cm), Roman Egypt, State
Museums in Berlin



Wood doll, 1st-5th c. (H 18.6 cm, W 4.5 cm, D 1.8 cm)

Wood doll, 3rd-5th c. (43 g)

Both: Karanis (Egypt), Kelsey Museum at University of Michigan



Carved bone doll (H 5.25 in, W 1 in)

Bone doll (H 9.20 cm, W 1.8 cm)

Bone doll head and torso (H 3.75 cm, W 1.75 cm)

All: 1st-2nd c., Parthian (Mesopotamia), British Museum)



Unfired clay doll, 3rd-4th c. (H 4.3 cm, W 1.9 cm, D 2 cm, 19.7 g)
Ceramic painted doll, 4th-5th c. (H 14.1 cm, W 6.5 cm, D 2.8 cm, 111 g)
Both: Karanis (Egypt), Kelsey Museum at University of Michigan



Terracotta doll (H 21.5 cm, W 8.5 cm), 1st or 2nd c., Roman, Johns Hopkins Archaeological Museum

Roman doll, c. 30 BCE-395 CE, National Museum Beirut



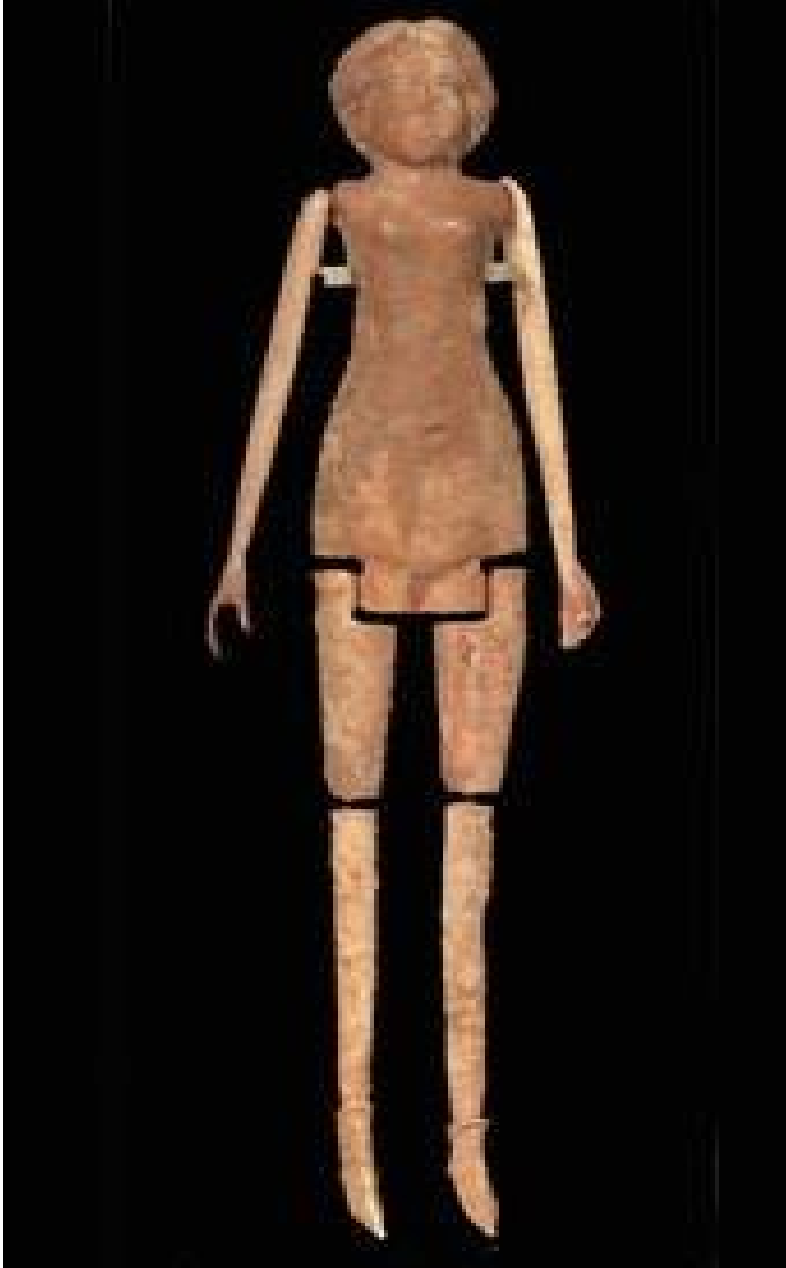


Bone doll, c. late 1st -2nd c.
(H 8.9 cm, W 2.7 cm),
Egypt, Alexander Ancient
Art; Coptic ivory doll, 3rd c.
4¼ in. (10.9 cm.)
Christie's.





Two bone dolls (arms missing), Roman, late 3rd c., J. Paul Getty Museum; Roman bone doll, c. 1st c. (H 7 in/17.8 cm), Bonham's; Roman bone doll, 3rd-4th c. 7½ in. (19 cm.) Christie's.



Bone doll, Roman Spain, 4th c. (H 21.5 cm), Albacete Museum; Articulated ivory doll, 3rd-4th c. (H 23 cm, W 6.5 cm, D 1.5 cm), Spain, Museu Nacional Arqueològic de Tarragona



Ivory doll from grave of
Crepereia Tryphaena, mid 2nd c.,
Rome, Centrale Montemartini

Miniature ivory carved head with
hairstyle of Empress Julia Domna,
3rd c., Yale University Art Gallery





Roman bone doll, late 2nd c. (H 8 1/4 in/21 cm), Christie's.

Roman ivory doll from Grottarossa Mummy sarcophagus in Rome, mid-2nd c., Palazzo Massimo alle Terme.





Coptic or Byzantine bone dolls. 2nd half of the 1st millennium AD, Benaki Museum



Bone doll with clay "hair" and bronze earring, 7th-10th c. (H 6 cm), Egypt.

Bone doll with hair made of bead strings, 7th-10th c. (H 16.5 cm, W 30 mm), Iran.

Both: British Museum





Bone doll, 7th-10th c. (H: 8.30 cm) and reverse
Bone doll with bitumen hair, 8th-9th c. (H 7 cm)

Both from Egypt, British Museum



Bone doll (hollow) with pierced shoulders and "hair" made of bitumen substance, 7th-10th (H 128 mm, W 37 mm), Egypt, British Museum



Bone doll (H 7.2 cm), Bone doll with remains of clay hair (53 mm), Bone doll (8.3 cm) Bone doll with pierced shoulders (96 mm) All from Egypt, 7th-10 c., British Museum.



Bone doll with pierced ears and incomplete earrings, 7th-10th c., early Islamic, Egypt British Museum Height: 5.90 centimetres



Bone doll, 7th-9th c., (H 6.7 cm, W 2.6 cm, D 1 cm); Bone doll, 7th-10th c., (H 112 mm); Bone doll, 7th-10th c., (H 6 cm, W 2 cm); Bone doll, 8th-9th c. (H 13.10 cm, W 1.45 cm, D .9 cm)
All: Egypt, British Museum



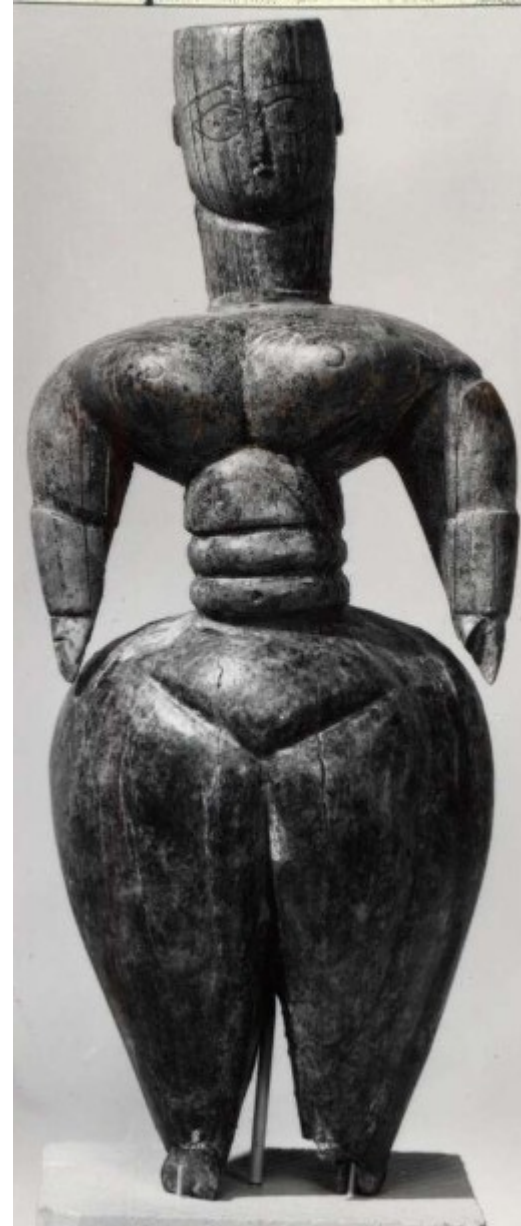
Bone doll, 7th-9th c. (H 2 3/8 in/6 cm, W 1 in/2.6 cm, D 1/4 in./0.7 cm), Egypt, Metropolitan Museum of Art

Bone doll, 7th-10th c. (H 85 mm), Egypt, British Museum





Bone doll, 7th-10th c. (H 10.8 cm), Egypt, British Museum



Bone doll perforated for arms,
hollow, 7th-10th c. (H 7.40 cm),
Egypt; Ivory doll, 7th c. Iran
Bone doll, 7th-10th c. (H 15.50 cm,
W 4 cm, D 2 cm), Egypt
All: British Museum



Stiftung
Preußischer Kulturbesitz

Puppe mit Tunika, Ident. Nr.: 10779

© Foto: Skulpturensammlung und Museum für Byzantinische Kunst, Staatliche Museen zu Berlin

Fotografin: Kariolina Sus

CC BY-ND-SA

Byzantine bone doll, c. 6th-7th c. (H 2 7/8 in/7.3 cm), Christie's
Bone doll head and neck in wool tunic , 5-8th c, Egypt, Pushkin Museum



Doll tunic (wool, linen; plain weave and tapestry weave), 6th-8th c. (H 6 5/8 in/16.8 cm, W. 6 7/8 in/17.5 cm) Egypt, Metropolitan Museum of Art.

Wool and linen doll tunic, 7th-9th c. (H 18 cm , W 28 cm), Egypt, Museum of Byzantine Art



Lindenwood doll, c. 1530 (H 21 cm)

Clay doll, 15th c.

Both: German National Museum, Nuremberg



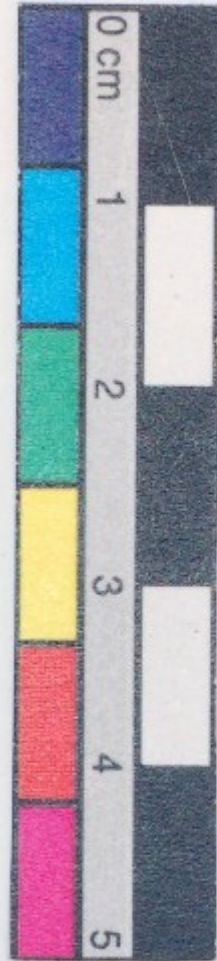
Doll, 15th c., Museum of Eastern Bohemia in Hradec Králové; Clay dolls, 14th c., Germanisches Nationalmuseum, Nuremberg.



Clay dolls, mid 14th c., Germanisches Nationalmuseum, Nuremberg; Toys from Excavations at the Carmelite Friary in Esslingen am Neckar (Dr.Hartmut Schäfer), 13th-16th c.



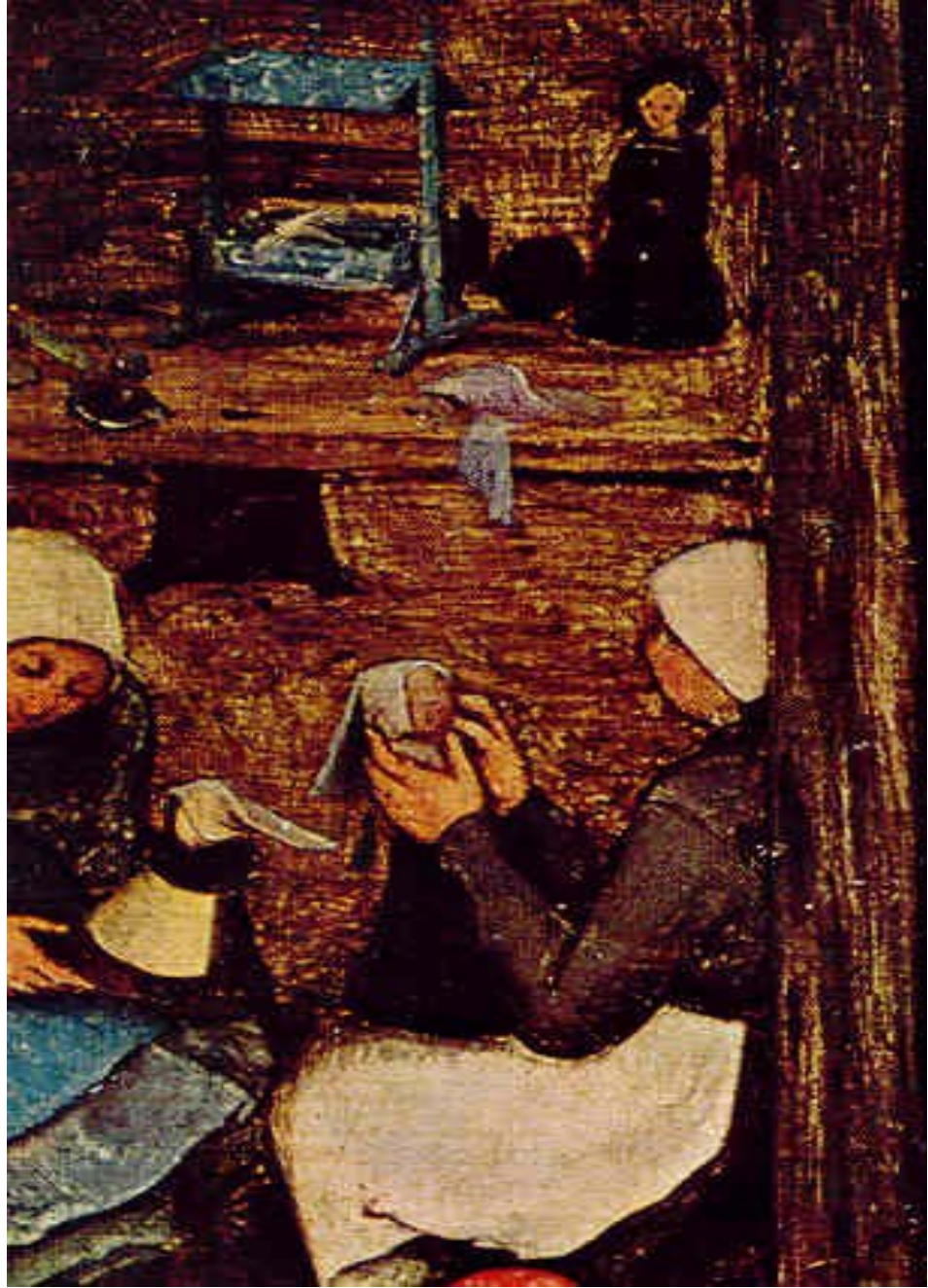
Yorkshi



60.60 g); Lead alloy female doll, Grimsby, Lincolnshire (H 62.55 mm, W 31.59 mm, D 1.46 mm, 14.3 g), Both 16th c. from British Museum.



Complete pewter doll (left) and silver-colored metal doll (right) excavated from the same site.
British Museum Dimensions Length: 78.05 millimetres Weight: 15.60 grammes Thickness: 32.90 millimetres Width: 19.88 millimetres



Jointed boxwood doll. c. 1525, (Standing H 21.6 cm, W 8.3 cm, D 3.6 cm) Sculpture Collection and Museum of Byzantine Art; Pieter Bruegel the Elder, Children's Games, 1560, Kunsthistorisches Museum Vienna



Die Hausbücher der Nürnberger
Zwölfbrüderstiftungen, 1558, Amb. 317b.2° Folio
10 verso (Mendel II); Detail from Lucas Cranach
the Elder, Christ Blessing the Children, c. 1535-
1540, Stadel Museum



Native woman of Pomeiok carrying a clay vessel, and her daughter holding a doll and rattle (detail) by John White, 1590, Library of Congress; Das kleine Mädchen im Alter von zehn Jahren (The little girl at the age of 10), 16th c., Herzog Anton Ulrich-Museum



Jan Claesz, *Girl with a Rattle*, c. 1609, Fries Museum; Stoneleigh Triptych: *Portrait Of The Three Children Of The King Of Spain* (detail), 1506; Jan Cornelis Vermeyen, *Portrait of Archduchess Katharina Renea*, Kunsthistorisches Museum.



Two costumed dolls, c. 1530, Doll dressed as Belgian beguine, mid 16th-mid 17th c.,
All: Kölnisches Stadtmuseum (Cologne State Museum)



Doll dressed as woman from the Moselle region

Doll dressed as woman from the Eifel region

Both: mid 16th-mid 17th c., Kölnisches Stadtmuseum (Cologne State Museum)



Isaac van Swanenburg, Portrait of Catharina van Warmond, 1596 Museum Meermanno; Portrait of Lady Arabella Stuart, 1577, Hardwick Hall



Pandora fashion doll, c. 1600,
Livrustkammaren (Swedish Royal
Armory)



Mother and child at toy-stall; after Adriaen van de Venne; illustration of an unspecified edition of Jacob Cats' "Spiegel vanden Ouden ende Nieuwe Tijd" (first edition published in The Hague: 1632), British Museum; Detail from William Larkin, Three Young Girls, c. 1620, Berger Collection

More Avenues for Research



Wooden doll with silk dress, 3rd c. (H 8.9 cm, W 3.6 cm), China, British Museum



Walrus ivory figure, 2nd-4th c. Punuk (H 1 11/16 in/4.3 cm)

Walrus ivory figure, 2nd-4th c. Punuk (H 1 7/8 in/4.7 cm)

Walrus ivory head, 2nd-4th c. Old Bering Sea (H. 2 1/2 in/6.4 cm, W 1 3/4 in/4.4 cm, D 1 5/16 in/3.3 cm)

All: modern Alaska, Metropolitan Museum of Art